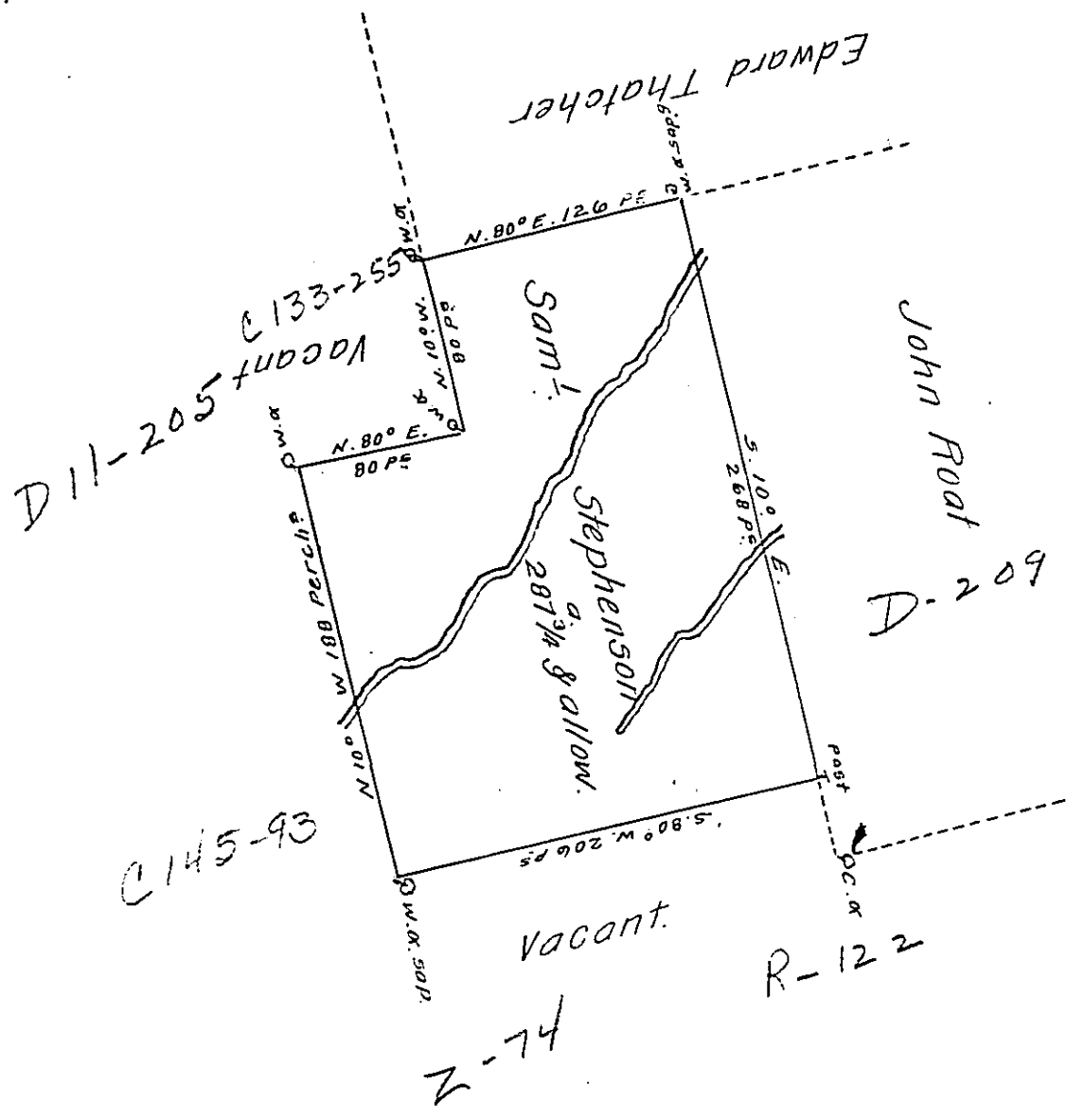


Sug. Loaf -
Luzerne.



A Draught of a Tract of Land Called—situate on the Waters of Nescopeck— adjoining land Surveyed for Edw^d Thatcher & John Roat in the County of Northumberland, containing two hundred & eighty Seven Acres & three Quarters besides the usual allowance of 6th Cent for Roads &c Surveyed the 12th day of November 1773. for Samuel Stephenson in Pursuance of an order dated the 3^d Day of August 1769. N^o 3702.

by

Chas^s Stewart D.Y. Sur^r

To

John Lukens Esq^r
Survey^r Gen^l

IN TESTIMONY that the above is a copy of the original remaining on file in the Department of Internal Affairs of Pennsylvania, made conformably to an Act of Assembly approved the 16th day of February, 1833, I have hereunto set my Hand and caused the Seal of said Department to be affixed at Harrisburg, this eighth day of September 1910.

Henry Houck

Secretary of Internal Affairs.